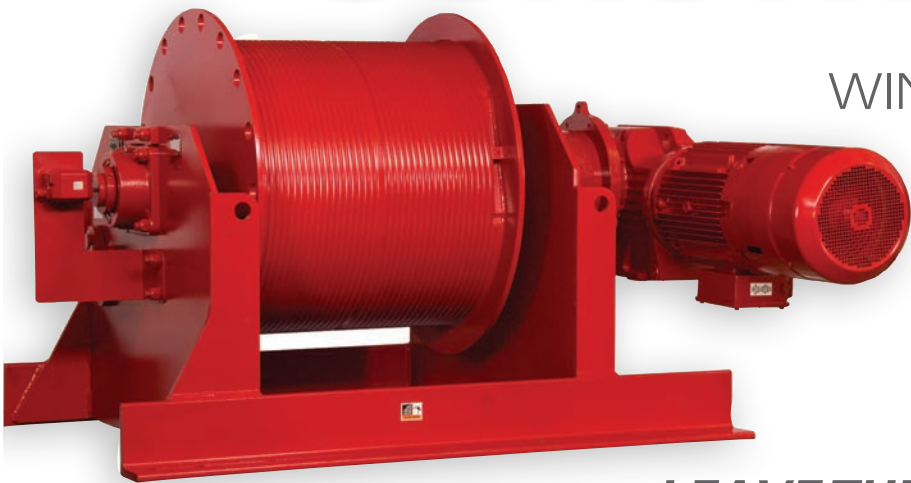


Thern Cable stay Winches  
Hoover Dam Bypass Bridge  
Construction

# CONSTRUCTION

WINCHES AND CRANES



 **THERN**

*LEAVE THE HEAVY LIFTING TO US*



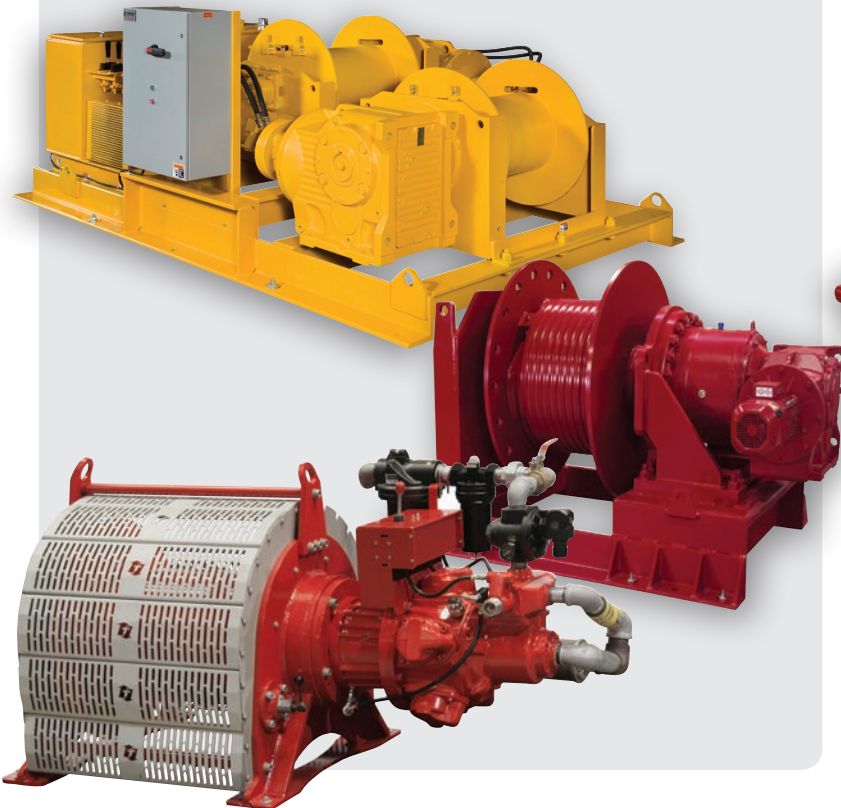
# Reliable U.S.A. Made Products for Equipment and Material Handling

## Heavy-Duty Construction Winches

- Load ratings up to **100,000 lbs** and beyond (45,359 kg)
- Electric, Hydraulic or Pneumatic Operation
- Multiple options and customization available
- Easily lift, pull or position heavy equipment, tools, concrete panels, construction materials



Therm air winch on construction site at Linq project Las Vegas World's largest ferris wheel



## Portable, Service Winches

- Load ratings up to **10,000 lbs** (4535 kg)
- Manual, Electric or Pneumatic Operation



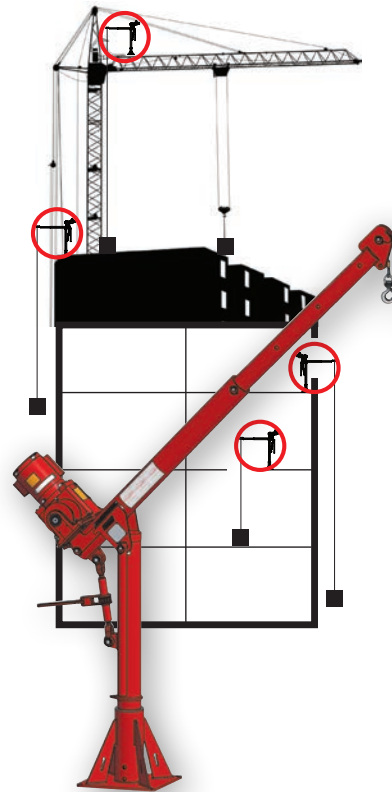


## Custom Construction Winches

- Load ratings beyond **100,000 lbs** (45,359 kg)
- Experienced engineering and technical sales staff
- Excellent lead times



**World Trade Center Winch**  
Lifting heavy, large elevator guide rails and elevator cars long distances at high speeds. A precision, variable speed control and complete portability using a pallet jack.



## Portable Utility Cranes

- Load ratings up to **2,000 lbs** (907.2 kg)
- Lift beyond 100 feet (30 meters)
- Manual or power hoist operation



## Truck Mount Cranes Stationary Cranes

- Load ratings up to **3,000 lbs** (1360.8 kg)
- Manual or power operation



Utility and maintenance rooftop applications for lifting tools, HVAC equipment, etc.

*a reputation of*  
**Excellence**

With over 65 years of varied experience and continuous research, development and testing, Thern winches and cranes have established a worldwide reputation for toughness, versatility and reliability. Today, Thern continues its tradition of excellence by providing standard and customized load handling equipment to leading companies all around the world. The company offers lifting and pulling solutions to a variety of industries.



Bulk Handling



Construction



Defense/Government



Manufacturing



Mining



Oil & Gas



Theatre



Utilities  
Power Generation



Water/Wastewater

 **THERN**  
*LEAVE THE HEAVY LIFTING TO US*